

# MOBILE TRACTION POWER SUBSTATION

---



**ELECTRICAL DESIGN  
TECHNOLOGY**  
*The Power of One*



# MOBILE TRACTION POWER SUBSTATION

**Designed** for Traction Power municipalities and operators. Provides a fully self-contained, turnkey resource to upgrade, rebuild, and retrofit existing substations without loss of power. No need to reallocate expensive alternative resources (i.e. diesel buses), reduce revenue services, or create rider hardships.

Engineered and built to ANSI, IEEE, NEMA, OSHA, ASTM standards on a custom DOT approved fully self-contained weatherized trailer to operate in any condition. Complete with self-powered hydraulic leveling system, SCADA, fire & security, integrated battery bank, dielectric insulated floor, climate control.

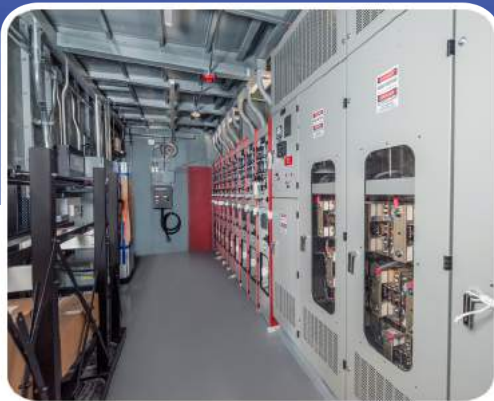


**CALL SUPPORT 707-578-4848**



# Mobile Traction Power Substation Features

- Up to 5MW
- Input voltage of choice up to 38KV
- 615VDC output switchgear (other voltages available)
- Custom SCADA, Alarm, Security, Fire packages to interface with existing systems and can be designed to matchup with specific needs
- Nema-3R with walk-in service aisle so the Substation can be worked on/operated in any condition
- Self-contained control power with integrated battery bank



- Built to applicable ANSI, IEEE, NEMA, OSHA, ASTM standards and can be customized to any local special requirements
- Ventilated as needed. Conditioned / heated air optional
- Dielectric insulated flooring
- Relaying as specified by customer customized to your needs
- Optional incoming separate switchgear (ground mounted on movable skid) with Utility metering if needed for separate incoming service. (Provide AC control power for substation if not otherwise available).

We recognize that customers systems are often unique and specific to applications and sites. Our self-contained Traction Power Mobile Substation is designed to customer requirements and to accommodate any configuration.

## Dimensions and Weights

**Length:** 58' with removable gooseneck  
**Width:** 14'

**Weight:** 120,000 lbs  
Steerable rear axel available for extreme maneuverability

# About Us

---

Electrical Design Technology, Inc. is a leading supplier of low, medium, and high voltage power distribution equipment since 1984. Our business mantra, "The Power of One", provides our customers with a single source on engineering services, project management, and equipment acquisition including transformers, switchgear, motor control centers, panelboards, equipment buildings, and instrumentation systems. We provide excellent service to government, commercial, and industrial projects throughout North America and around the World. We excel in improving projects by working with consulting engineers in design and/or technical specification writing, as well as providing value engineering to our clients after the project is awarded. In addition to supplying equipment, our services include submittals, component lists, field coordination and testing, project management, and customer service to facilitate the integration of all equipment.

EDT has key strategic partnerships with U.S. and international manufacturers who deliver the highest quality and performance. Equipment provided is built to the user's specifications, and delivered on time and on budget the first time. By coordinating the materials in-house ensures the best service and proper application of equipment.

Unlike distributors, manufacturers' agents, or other suppliers, EDT holds a unique position in the field, as a Value-Added Partner in our customer's projects. We are not bound by contractual obligations to our vendors which enables us the freedom to choose the highest quality and most appropriate equipment for each project, being unbiased in our choices.



**CONTACT US**  
**FOR MORE DETAILS**



**ELECTRICAL DESIGN  
TECHNOLOGY**  
*The Power of One*



## California

354 Providence Mine Rd.  
Nevada City, CA 95959



## Canada

8 Baraniuk St, St. Catharines  
Ontario, Canada L2N 1N5

## Get in touch

---



(707)578-4848



[www.EDT-Global.com](http://www.EDT-Global.com)